



UNI  **MEBEL**
ship interior outfitting

About Us

UNI-Mebel is on the market since 2006, providing comprehensive services in the field of insulation and interior design for the marine industries. The company is active in the country and abroad where we work with reputable clients.

The scope of our services includes:

- Design
- Technical documentation
- Organization of the project
- Execution and delivery of materials
- Supervision
- Quality control
- Warranty service

In all stages of the project we base on the people –on the a team of up to 150 skilled professionals who support customers with their rich experience in shipbuilding industry.



Our history started with Uni-Mebel in 2006. Presidents and owners, Tadeusz Cichoń & Andrzej Parawa started with them visions from them own garage in Szczecin, Poland. The company grew rapidly into a high end and well known service for the shipbuilding industry. We have delivered a vast amont of accommodation systems for ships around the globe in compliance with customer requests. We are represented with divisions in Poland: Szczecin-Trzebusz on West-Pomerania and Starogard Gdański in Pomerania area.



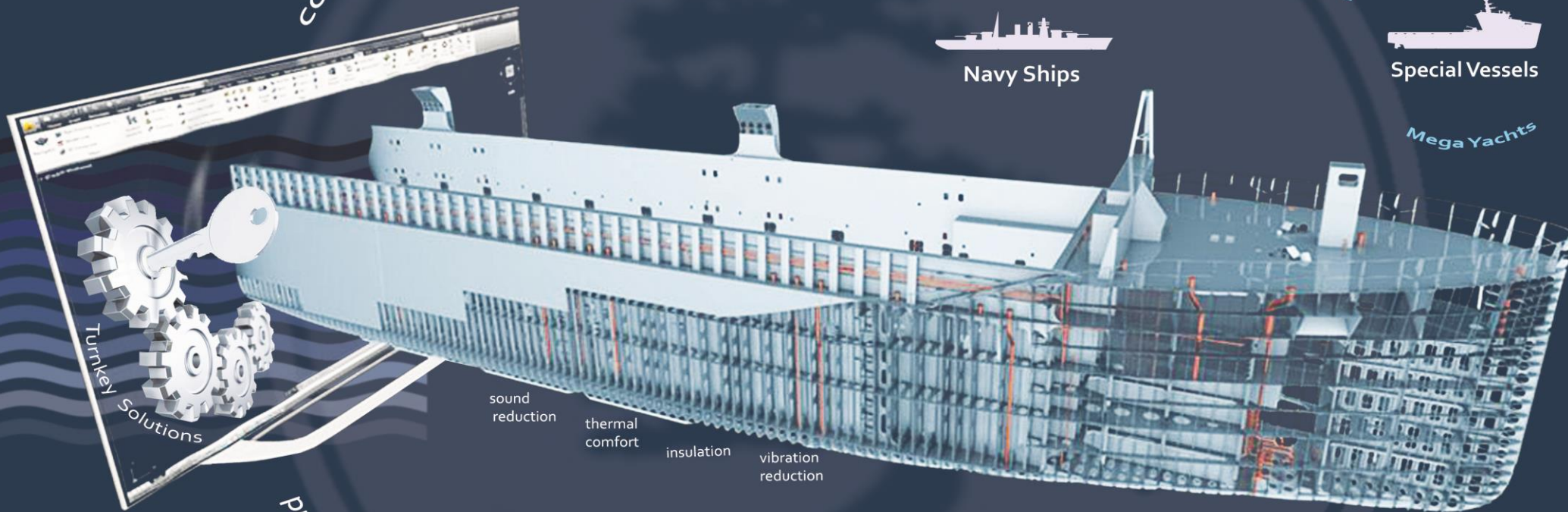
comfort
safety



Surface Vessels



Mega Yachts



professional care

UNI-MEBEL

Passengers & Crew



Crew Area



Public Area



Utility Area



Passenger Area

Floors
Doors
Walls
Insulation
Ceilings
Furniture
Wet Units

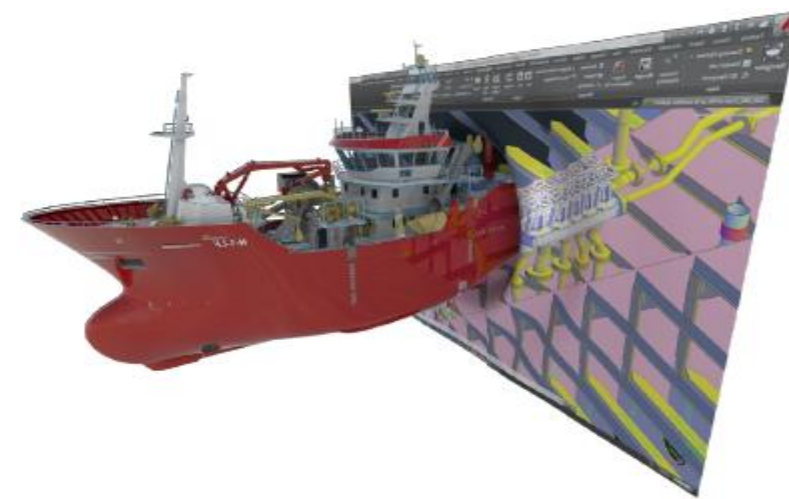
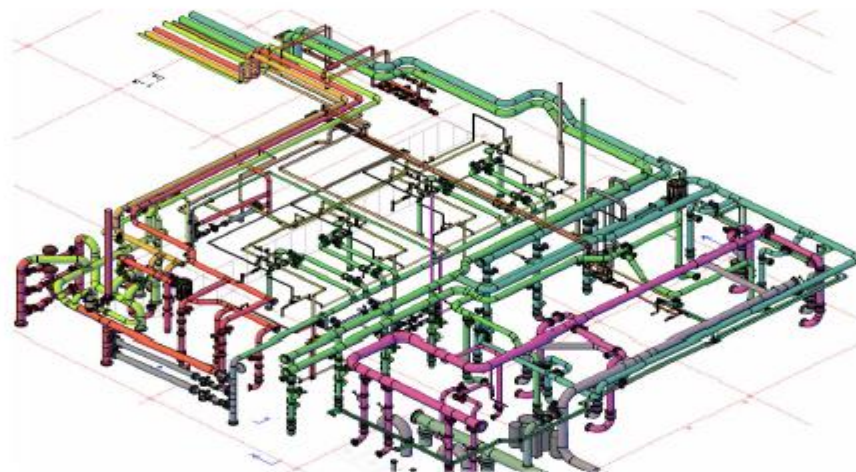
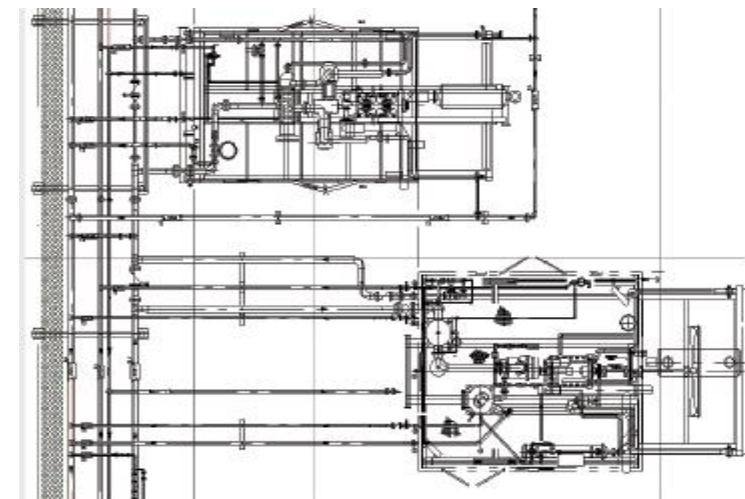
Engineering & Consulting ● Production & Logistics ● Proj. MGMT. & Field-Executions ● Maintenance & Refurbishment ● Product Development





Engineering

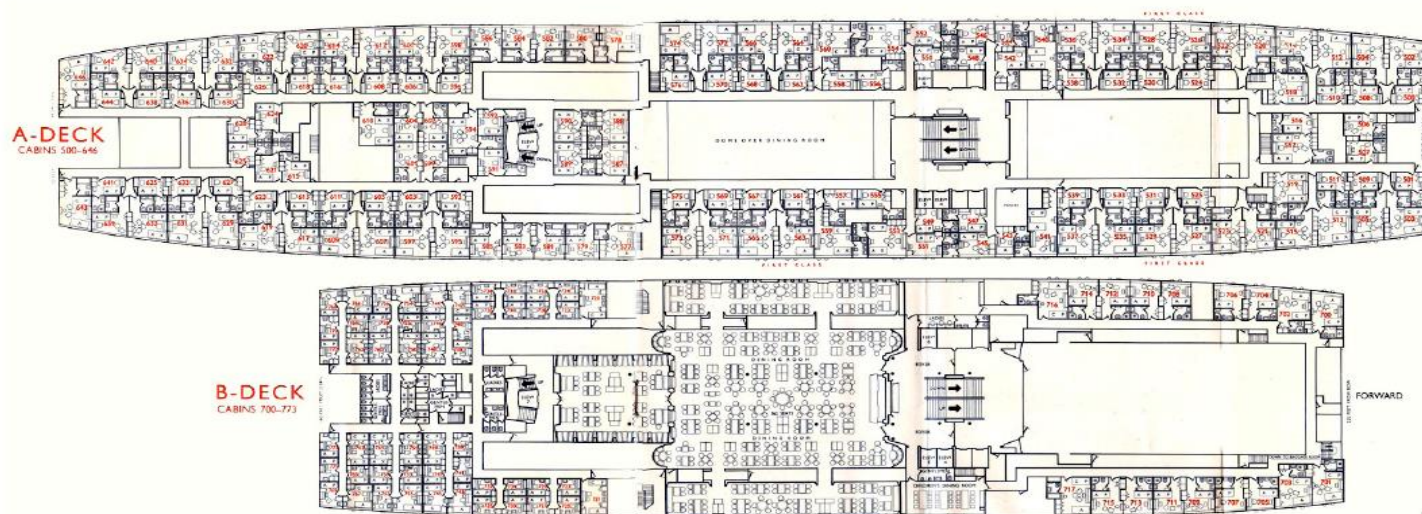
Our technical department is a team of qualified designers and architects with a many years' experience in their professions, which will prepare for you a complete documentation of the ship interior. We are equipped in the necessary tools and professional production infrastructure to be able to fulfill the demands and requirements set to us. Our customers can count on our professional support in the areas of planning, arrangement and selection of the adequate materials. In the 3D visualizations created by us we try to hand over the ambiance of the interiors designed by us and help to make the right decision about the final look of the space or changes, which needs to be introduced over there.





Consulting

We create every project in a close cooperation with our client and advise him to take the best decision. We propose the most advantageous technical solution available in the market. We select colours and materials ensuring the functionality of every specific element of the interior fitout.





Furniture Factory

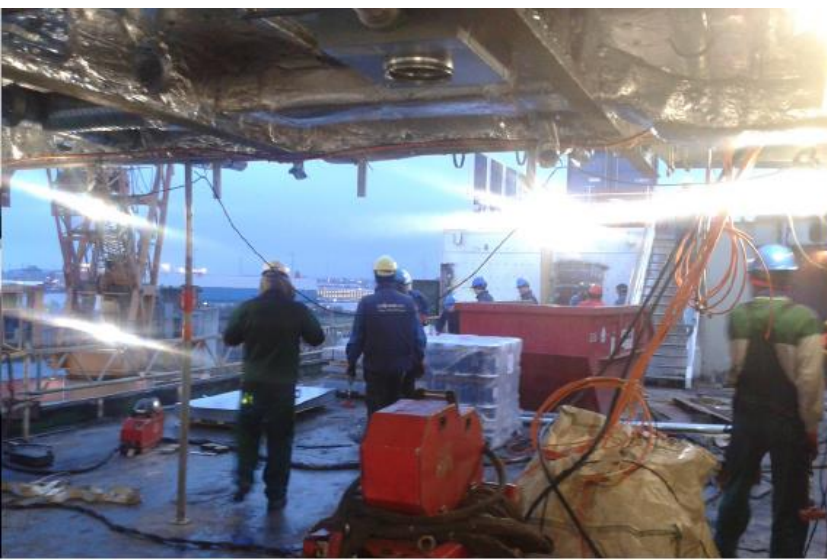
Our newly opened production site, equipped in the most modern machines, allows to maintain high and repeatable quality of produced elements. All technological and production processes, which are a part of the furniture development are integrated in one IT system. It gives us a broad spectrum of production possibilities and a full flexibility in the realization of turn-key projects. We are proud of our performance attested by the following certificates: Quality Management System standard ISO 9001:2015; Environmental Management System standard ISO 14001:2015; Occupational Health and Safety Management System standard OHSAS 18001:2007





Project Management

Our employees are of crucial importance in all implemented processes. We rely on them, because they create a team of highly skilled professionals, which support our customers on every step of the project. Thanks to their many years' experience, collected qualifications and commitment we are able to face greatest challenges. That's why we continuously invest in trainings and development of the their expertise and skills.



Sample projects

The passenger-car ferry m/f "Copernicus" was rebuilt for the ship owner Euroafrica Shipping. The scope of Uni-Mebel performance has covered works carried out in the hotel part, which was added as a part of the ferry. We were responsible for the work project, technical insulation, delivery of materials and the assembly of interior equipment in the renovated as well in the added part of the ferry.

The works were carried out at the area of the Szczecin Shipyard. Uni-Mebel was one of the main work contractors on this unit.

Owing to the commitment of the Uni-Mebel workers it was possible to accomplish the works in a spectacular time and allow to introduce the ferry on the Świnoujście – Trelleborg route already during the seansom 2018.



M/f Copernicus

Length (L) 150,38 m

Width (B) 23,4 m

Draft (D) 6 m














The modernization of the training ship took place in the Nauta shipyard in Gdynia. Our scope of work included the renovation of 12 student mugs, the office of the authorizing officer and two cabins, with a total area of almost 300 m². In close cooperation with the client, we designed, produced and installed functional furniture with a large number of practical storage compartments. The competence of Uni-Mebel also included the design of interiors as well as the delivery and assembly of equipment: wall and ceiling formwork, doors and window niches. The total renovation time is only 7 weeks.

Dar Młodzieży Sailing Ship

Length (L) with bowsprit 108,815 m Width (B) 14 m Draft (D) 6.6 m









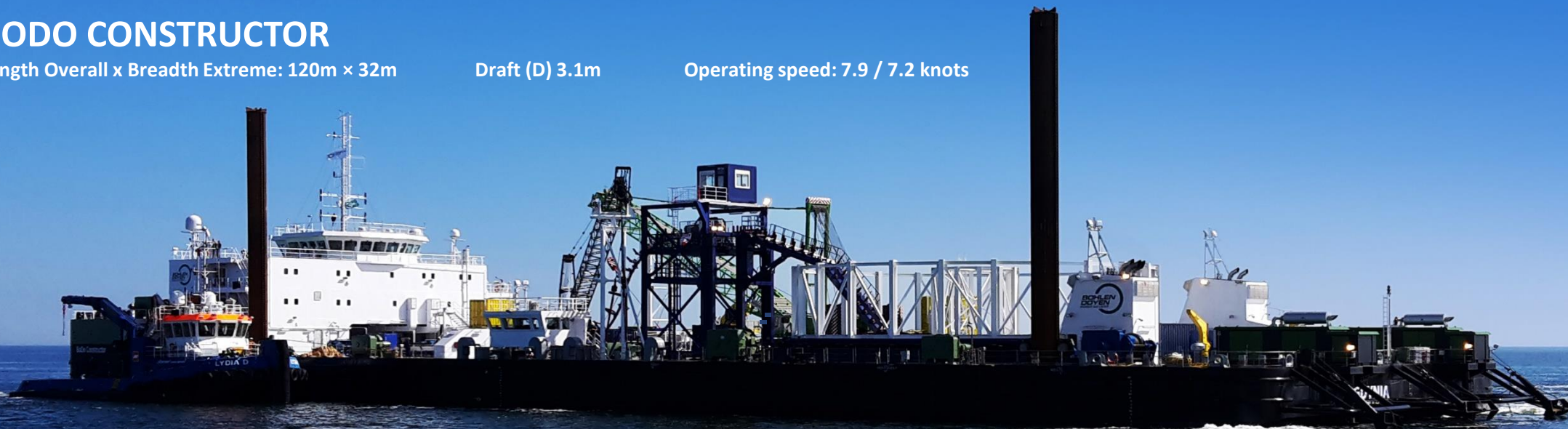


BODO CONSTRUCTOR

Length Overall x Breadth Extreme: 120m × 32m

Draft (D) 3.1m

Operating speed: 7.9 / 7.2 knots



A specialized, seagoing barge called “BoDo Constructor” is intended for laying cables on the seabed.

The ship’s construction was commissioned by the German company Bohlen & Doyen GmbH, specializing in hydrotechnical works in the North Sea and the Baltic Sea.

The scope of our company’s work included comprehensive equipment of the entire superstructure, with a total area of almost 855 m². The Uni-Mebel company has participated in the creation of the concept of furnishing residential premises, including making a choice of colors of the materials used and interior design. She was fully responsible for material deliveries, their coordination and assembly: insulation, floors, walls, ceilings, doors, window niches, furniture, handrails, balustrades, sanitary blocks, cold store, etc. Functional furniture for social rooms intended for a 50-person crew has been designed and manufactured by Uni-Mebel.







During the modernization of the passenger-car ferry m/f „Mazovia” 69 new passenger cabins were added including sanitary equipment, floors and stairwells.

Additionally the redevelopment has covered public areas like: reception, passenger seats area, lounge bar and restaurant.

Uni-Mebel participated in the creation of the concept of arranging new passenger cabins, including choosing the colors of the materials used and the interior design. She also designed and made wooden furniture. Most of the selected equipment, such as sanitary blocks, wall and ceiling formwork, doors, window niches, are products of Polish companies from the shipping industry.

In an extremely short time, a design, arrangement and materials were delivered, which were assembled and handed over to the shipowner at an equally quick pace. At the peak of the time, the equipment was assembled by approximately 80 employees of Uni-Mebel.

Length: 168.15 m Width: 27.70 m Draft: 6 m Length of the loading line: 2620 m Operating speed: 16.7 knots

M/F Mazovia



The equipment has been provided with typical 4-passenger passenger cabins, as well as Lux-type cabins, currently being the business card of Mazovia. What draws attention is the color distribution of communication nodes in green and red, corresponding to the arrangement of navigation lights on the ship: the green on the starboard side and the red on the starboard side.

The arrangement of the reconstructed public rooms was fully made by the Technical Department. Restaurant on deck 8 is decorated in bright colors, referring themes to the marine-Scandinavian style. The carpeting designed especially for Mazovia creates a sea wave motif, while the chairs arranged here are associated with small boats. The whole is complemented by details such as curtains that perfectly blend in with the surroundings and modern LED lighting in the form of sconces. Blue-gray-white colors are found in almost every restaurant element.

The separated duty-free store has been very well exposed and properly secured through a system of transparent blinds. The Lounge Bar on deck 9 has been combined with a modern disco and a dance floor. In addition, there is also a casino with roulette and slot machines.

A lighter carpet motif is a specially exposed place for organized conferences or trainings. This place is equipped with additional chairs for their participants. The reception area on deck 7 has been completely renovated. It was given a clear open layout, making it easier to contact the crew and passenger from the first moments of boarding.

All works were received by the RINA Classification Society, with the representative of which Uni-Mebel made a number of arrangements to meet current regulations.











The separated duty-free store has been very well exposed and properly secured through a system of transparent blinds. The Lounge Bar on deck 9 has been combined with a modern disco and a dance floor. In addition, there is also a casino with roulette and slot machines. A lighter carpet motif is a specially exposed place for organized conferences or trainings. This place is equipped with additional chairs for their participants. The reception area on deck 7 has been completely renovated. It was given a clear open layout, making it easier to contact the crew and passenger from the first moments of boarding. All works were received by the RINA Classification Society, with the representative of which Uni-Mebel made a number of arrangements to meet current regulations.



























SAFE CALEDONIA Platform

Rig - renovation and repair work carried out at Karmsund Service Base, Karmsund, Norway.

Scope of works: Repair works: New floor covering in Changing Room, new floor covering in Center Mess, tiling in Galley area, new floor covering in Corridors, new partitional wall.













Prosafe Offshore
































In 2013, Uni-Mebel at the Neptun Werft Shipyard in Rostock-Warnemunde, Germany prepare outfitting for a new building Inland Passenger Vessel. Scope of works: Fitting of wet units, laying of walls panels and ceiling panels, fitting of doors and windows, fitting of hand rails, furniture instalation.

Viking Atla Inland Passenger Vessel













VIKING
RIVER CRUISES

YOUR
CRUISE

WEATHER

MAPS

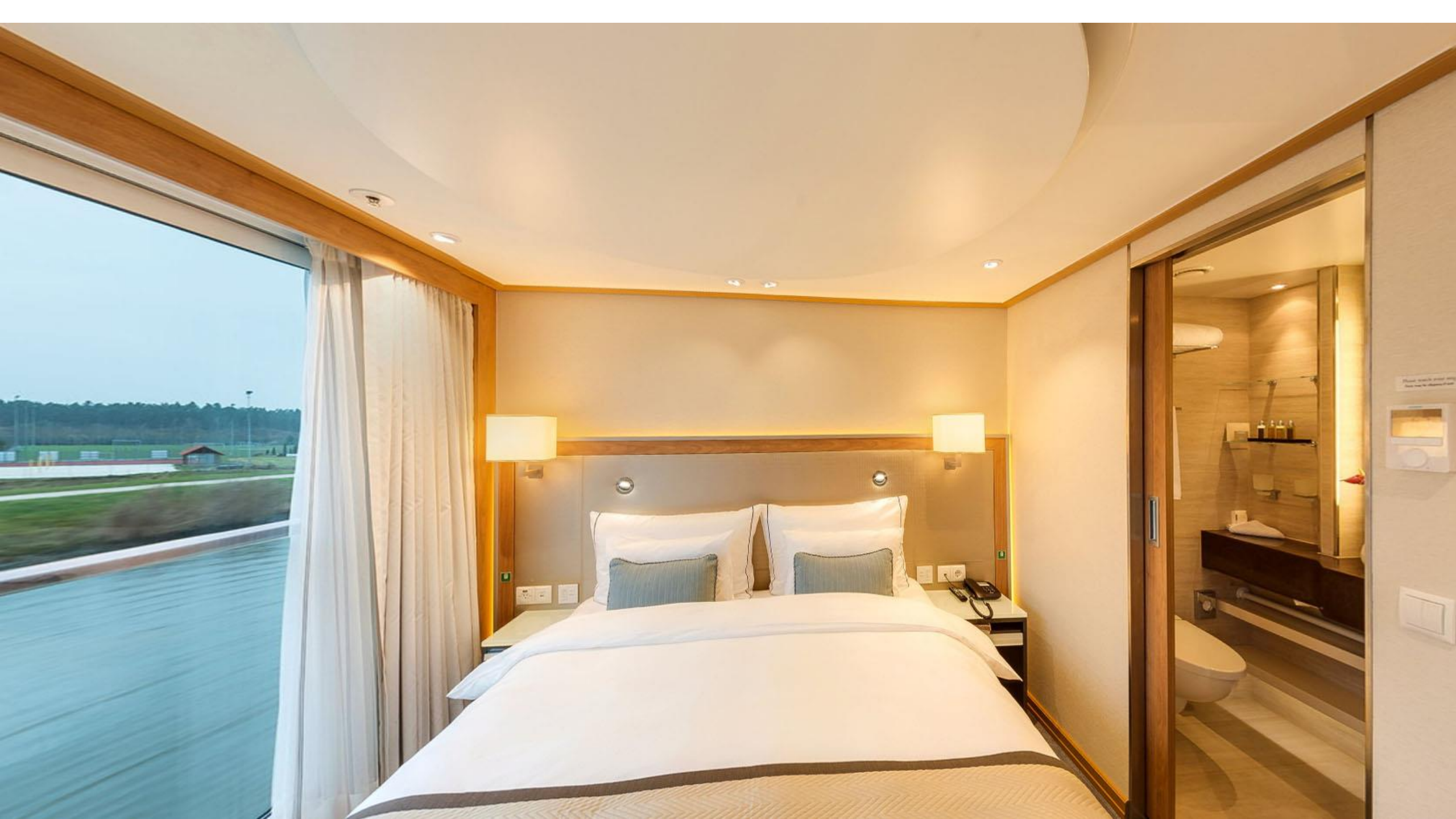
LIFE ON BOARD

TELEVISION

MOVIES

MUSIC

VIDEO MESSAGES





































YOUR CRUISE

WEATHER

MAPS

LIFE ON BOARD

TELEVISION

MOVIES

MUSIC

VIKING VIDEOS







ARCADIA Cruise Ship

In 2013, Uni-Mebel at the 'Lloyd Werft GmbH' shipyard in Bremerhaven, Germany, participated in the remount of the ARCADIA cruise ship. Scope of work: Design of insulation, insulation of new section, fitting of flooring floor.

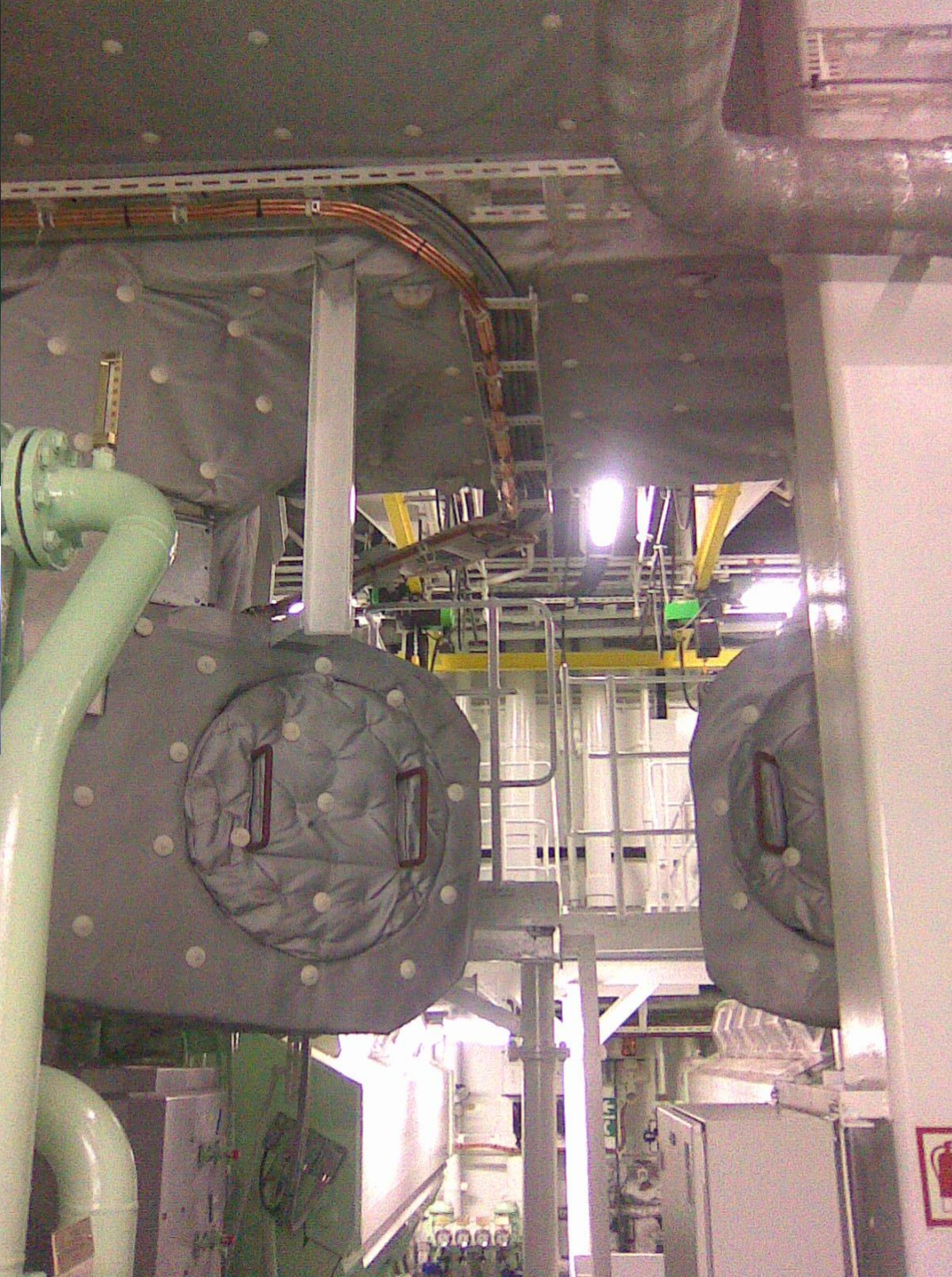




















SCHLESWIG-HOLSTEIN Double end ferry

Length: 70 m

Width: 17 m

Draft: 1.8 m

Operating speed: 10 knots

We also had the pleasure of equipping a Double end ferry which was being built at the Neptun Werft shipyard, Rostock-Warnemunde, Germany. Scope of works: New building: fitting of wet unit, installing of wall panels and ceiling panels , fitting of doors and windows, fitting of handrails, furniture installation. In 2018 our company outfitted the same type of vessel.





















Length: 37,9m Width: 5,5m Draft: 1.3m Operating speed: 8,9 knots

ODRA QUEEN River passenger ship

Polska żegluga Szczecińska has order a complete renovation and modernization of the Odra Queen river passenger ship. The new passenger and solar deck was designed and equipped by Uni-Mebel.

Scope of works: Ship repair: design, delivery of materials and installation of complete interior outfit





Standby Safety Vessel has been renovated in the MAKRUM S.A. Pomerania Shipyard, Szczecin, Poland

Scope of works: Repair works/Rebuilding: dismantling of whole outfitting, instalation of walls and ceiling paneling, installation of tiles, installation of furniture, instalation of windows and doors, outfitting of kitchen and toilet, performingof handrails, installatin of insulation, laying of floor compounds , installation of floatig floors, installation of top coverings, installation, design and production of furiture.



REYKJANES GUARD









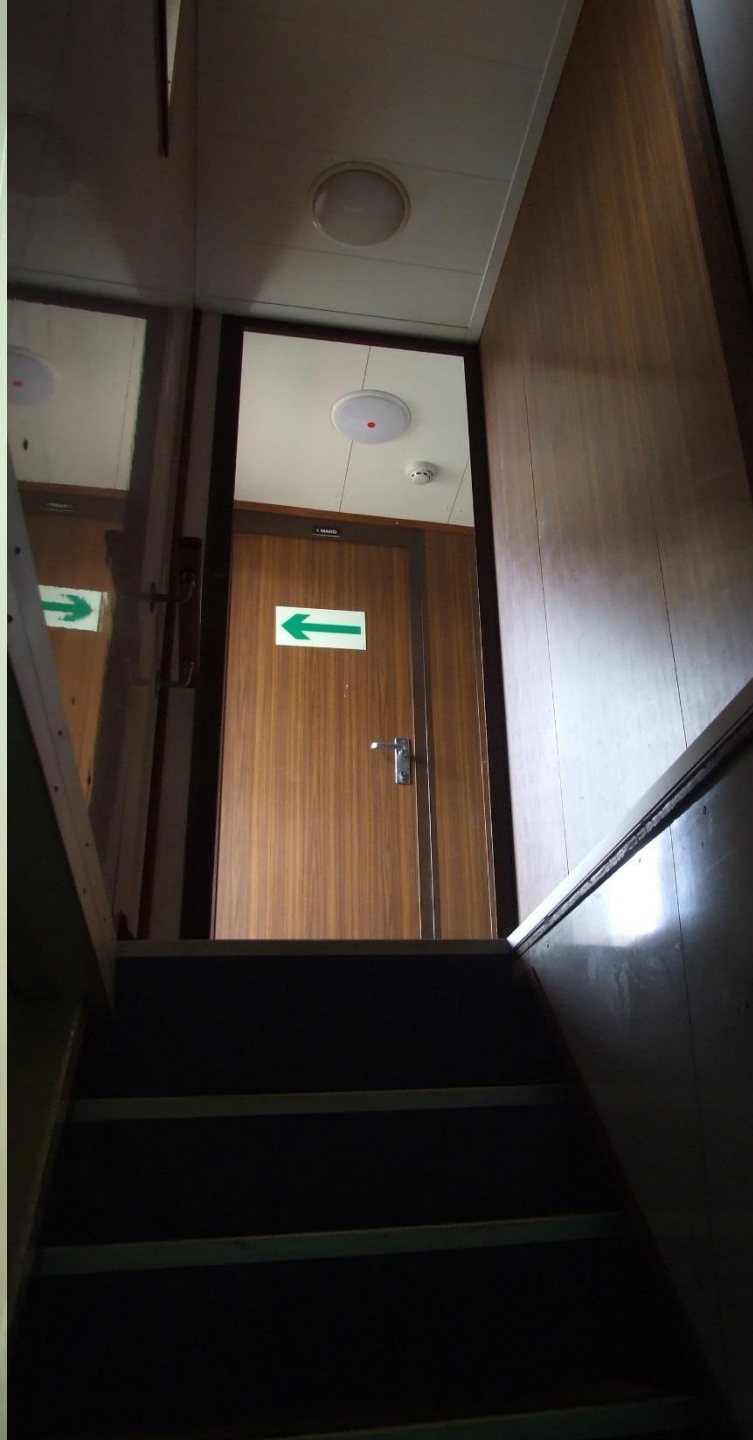


















main office:

Szczecin

ul. Cynkowa 1
70-856 Szczecin, Polska
91 880 80 29
91 880 80 30

www: uni-mebel.pl
mail: info@uni-mebel.pl

branch:

Starogard Gdański
Al. Armii Krajowej 2
83-200 Starogard Gd. , Polska



UNI  MEBEL



UNI  MEBEL



UNI  MEBEL



UNI  MEBEL



UNI  MEBEL



UNI  MEBEL



UNI  MEBEL



UNI



UNI  MEBEL



UNI  MEBEL

UNI  MEBEL



UNI  MEBEL



UNI  MEBEL

UNI



UNI  MEBEL



UNI  MEBEL



UNI

UNI  MEBEL



UNI  MEBEL



UNI  MEBEL



UNI  MEBEL

